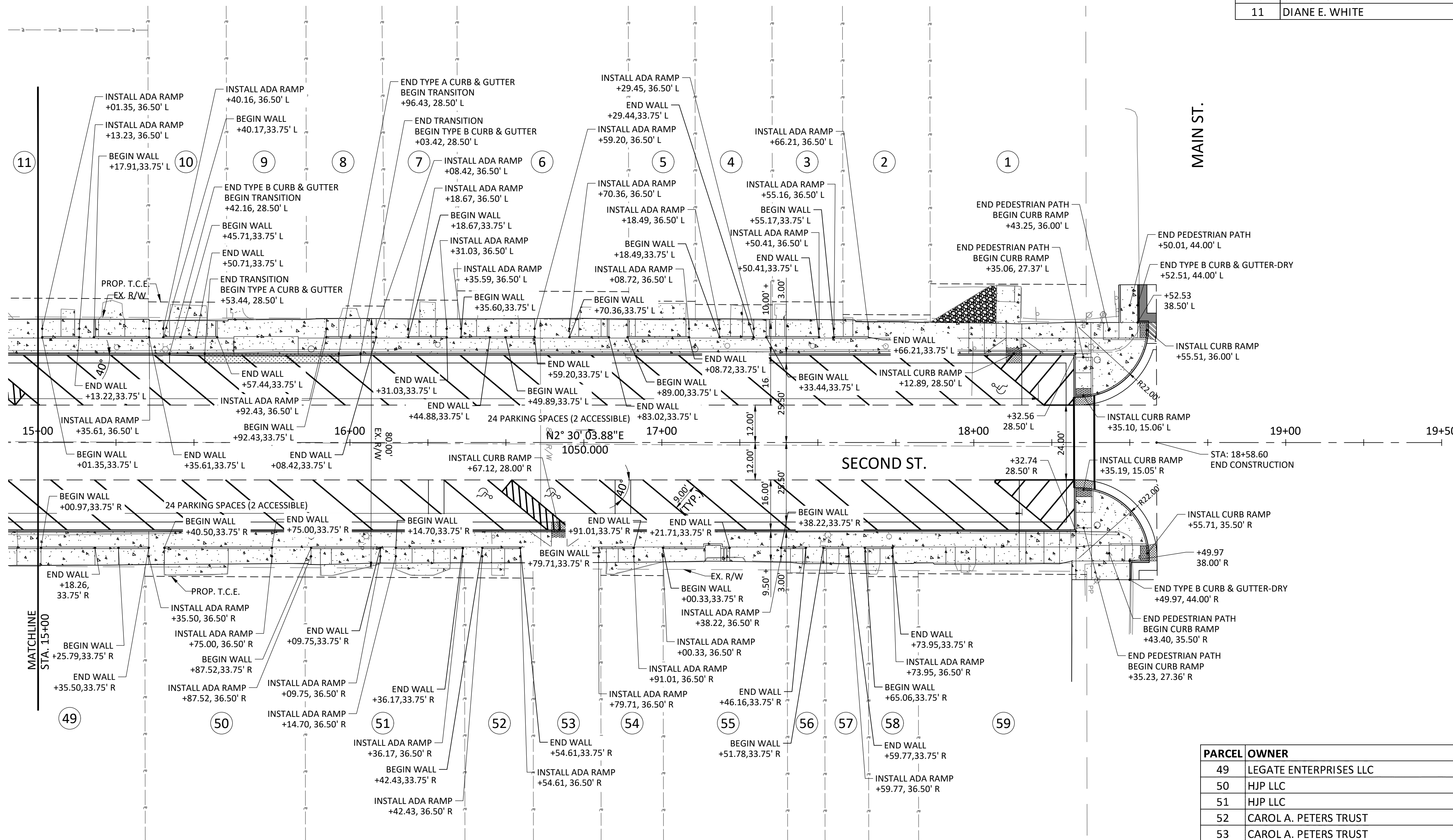


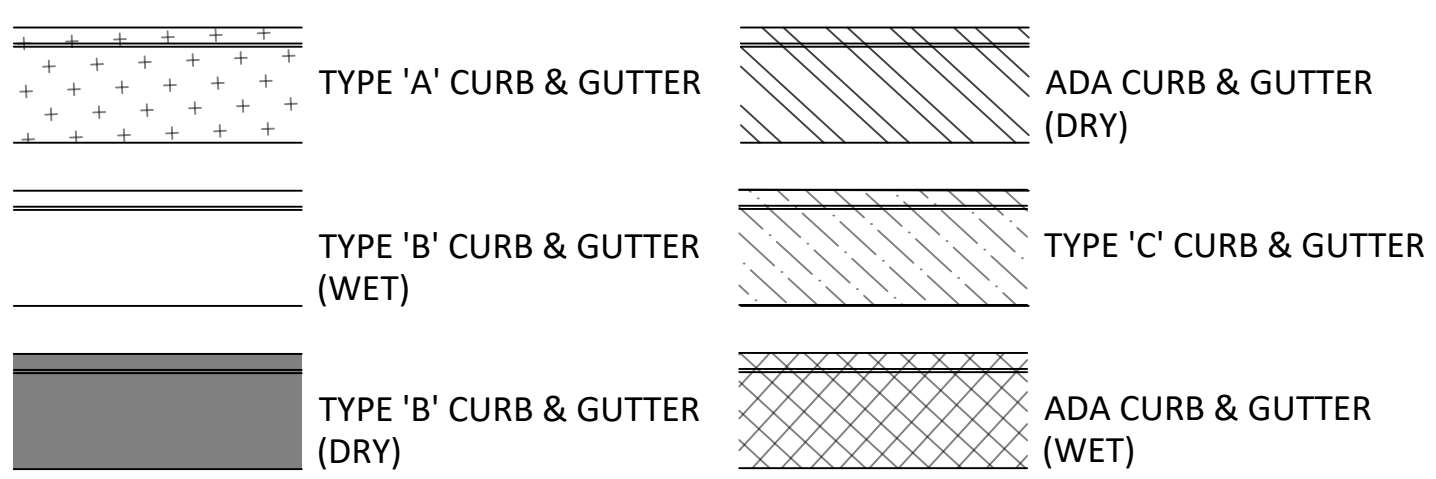
NOTES:

- SEE DETAILED GRADING SHEETS FOR SPOT ELEVATIONS, SLOPES AND DIMENSIONS FOR CURB RAMP & STAIRS.
- CONTRACTOR TO INSTALL FILTER SOCKS ON ALL EXISTING INLETS WITHIN PROJECT LIMITS.

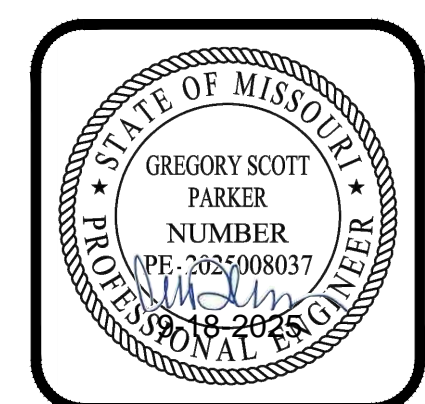
PARCEL	OWNER
1	MISSOURI BJ PARTNERS LLC
2	JACQUE L. FLOYD
3	J & B REAL ESTATE HOLDINGS LLC
4	MADSEN PROPERTIES LLC
5	PEDDICORD LAW LLC
6	IVA M. WILLIS
7	JENNIFER & JANET'S HOME TOWN CAFE, LLC
8	JENNIFER & JANET'S HOME TOWN CAFE, LLC
9	123 SOUTH SECOND STREET, LLC
10	CITY OF ODESSA
11	DIANE E. WHITE



LEGEND



PARCEL	OWNER
49	LEGATE ENTERPRISES LLC
50	HJP LLC
51	HJP LLC
52	CAROL A. PETERS TRUST
53	CAROL A. PETERS TRUST
54	ODESSA CHAMBER OF COMMERCE, INC.
55	BRYANT, EMILY & JOSH; BRYANT, KIERA
56	ERNEST LEE HARDIN, JR.
57	KEVIN D. HOFF
58	JASON LOGSDON
59	MJCC PROPERTIES LLC 4 SERIES



REVISIONS		DRAWING INFO.	
NO.	DESCRIPTION	BY	DATE
1	PLANS FOR BID	KEL	09/30/25

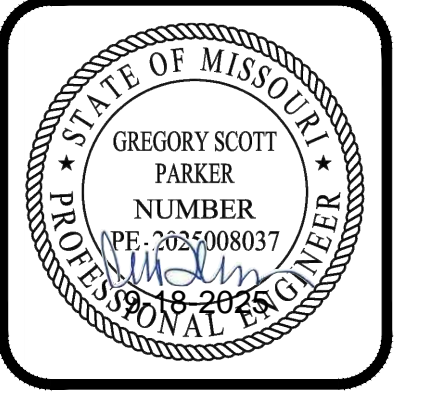
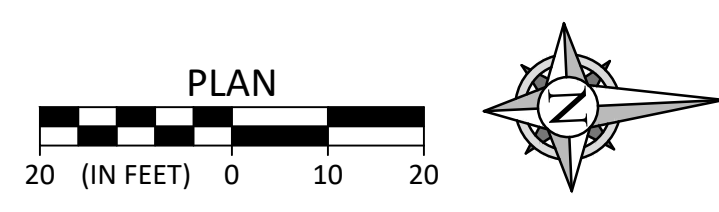
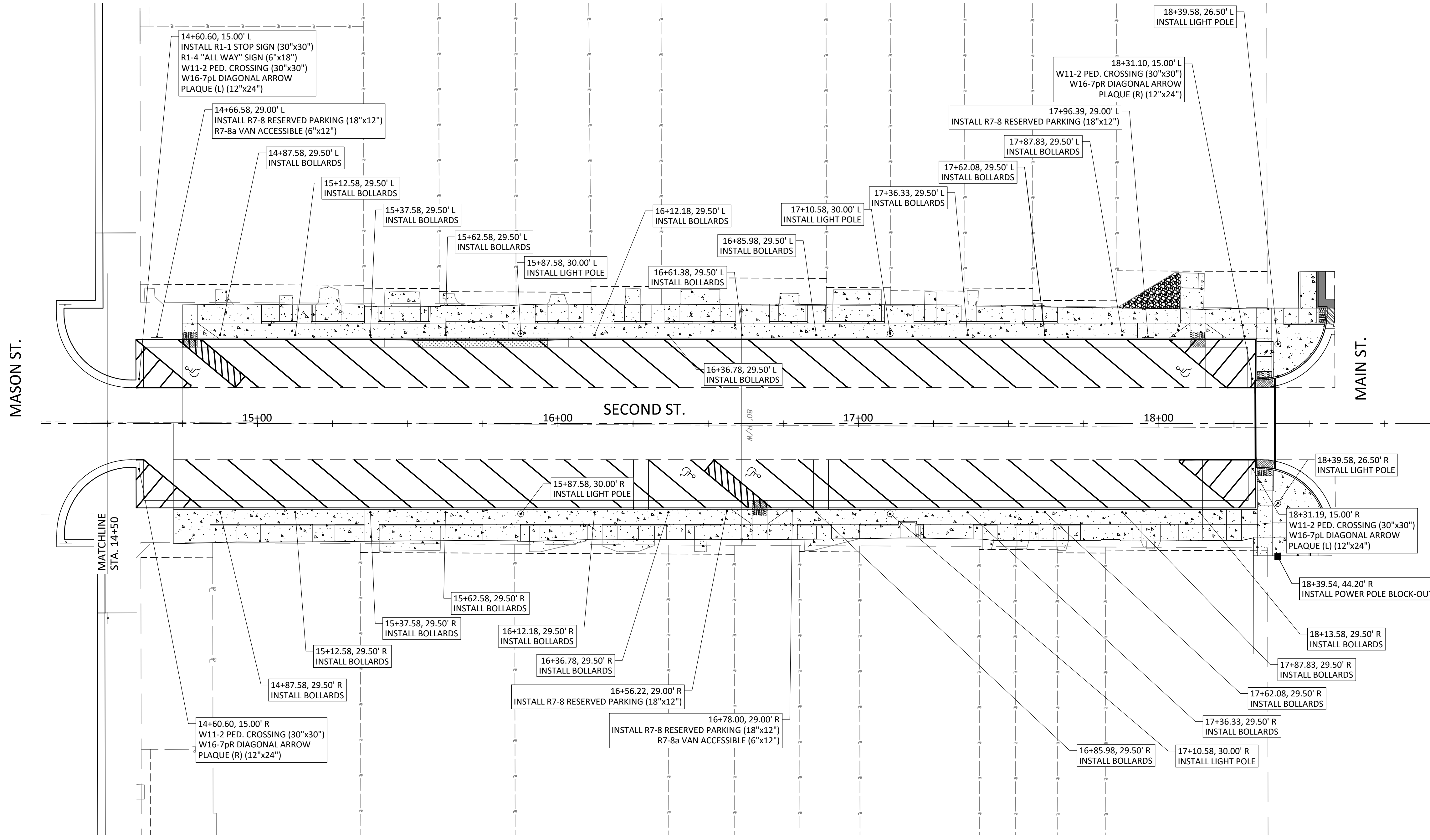
FIELD BY:	NDO
DATE:	9/18/2025
FIELD BOOK:	JOB NUMBER:
TAP-9901(440)	

© Copyright Anderson Engineering, Inc. 2012

GENERAL PLAN
SECOND STREET HISTORIC
DOWNTOWN DISTRICT IMPROVEMENTS
SECTION 36, T-49N, R28W / SECTION 01, T-48N, R28N
ODESSA, LAFAYETTE COUNTY, MO

SHEET NUMBER
10
OF 83





REVISIONS		DRAWING INFO.	
NO.	DESCRIPTION	BY	DATE
1	PLANS FOR BID	KEL	09/30/25

FIELD BY:	NDO
DRAWN BY:	
CHECK BY:	
DATE:	9/18/2025
FIELD BOOK:	
JOB NUMBER:	TAP-9901(440)

SIGN & POLE LAYOUT PLAN (SECOND)
 SECOND STREET HISTORIC
 DOWNTOWN DISTRICT IMPROVEMENTS
 SECTION 36, T-49N, R-28W / SECTION 01, T-48N, R-28E
 ODESSA, LAFAYETTE COUNTY, MO

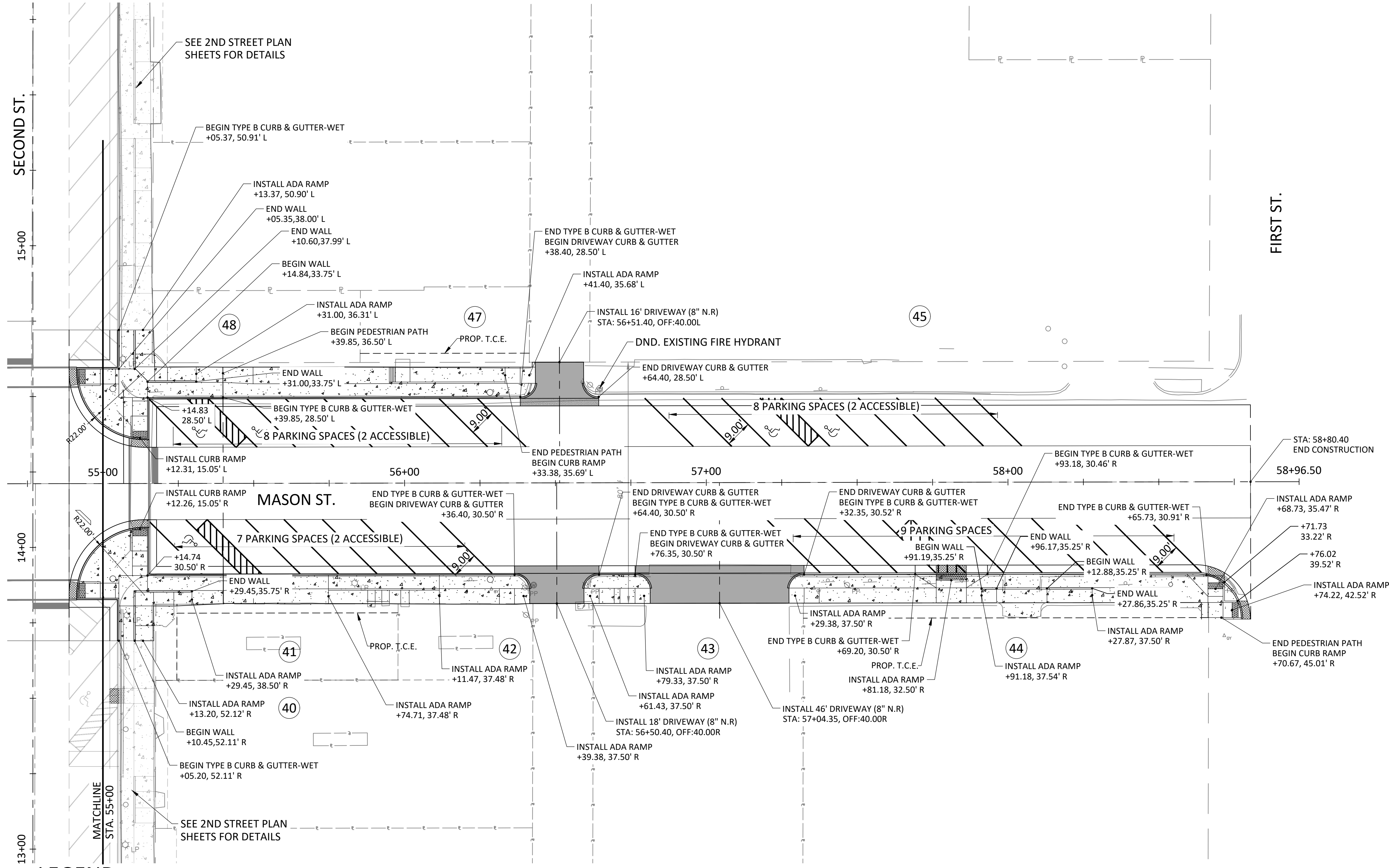
SHEET NUMBER
47
 OF 83

© Shaded drawings are not to scale. TAP-9901(440) Odessa - 2nd St Downtown CAD/Plan/Sig/Sp/Plat

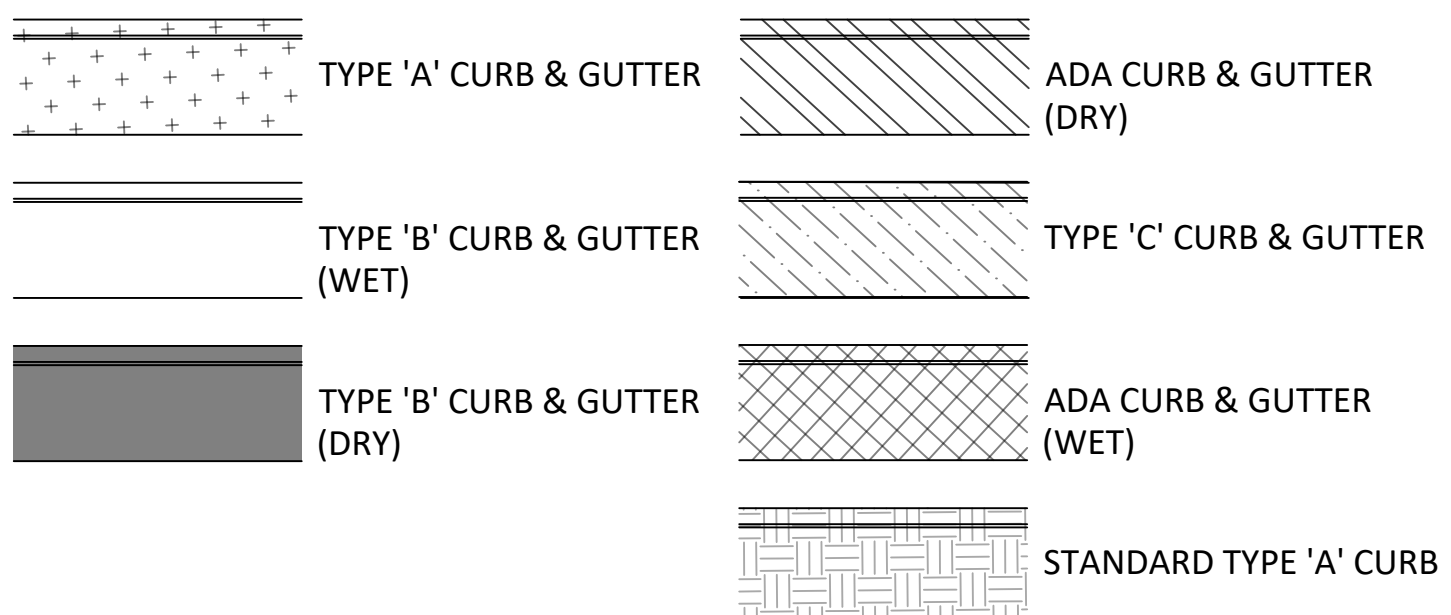
NOTES:

1. SEE DETAILED GRADING SHEETS FOR SPOT ELEVATIONS, SLOPES AND DIMENSIONS FOR CURB RAMP & STAIRS.
2. CONTRACTOR TO INSTALL FILTER SOCKS ON ALL EXISTING INLETS WITHIN PROJECT LIMITS.

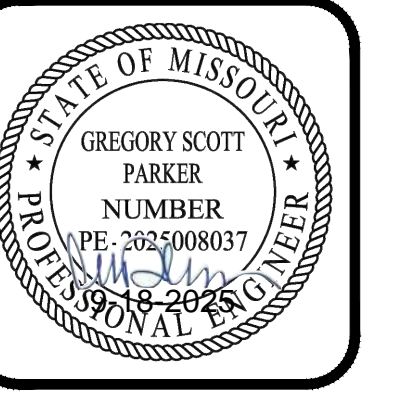
PARCEL	OWNER
45	TRAILS REGIONAL LIBRARY CONSOLIDATED PUBLIC LIBRARY DISTRICT #4
47	JEFFREY B & DEANNA M, GASH
48	HERITAGE INVESTMENT PARTNERS, LLC



LEGEND



PARCEL	OWNER
40	WOODRUFF'S RE HOLDINGS LLC
41	HERITAGE INVESTMENT PARTNERS, LLC
42	HERITAGE INVESTMENT PARTNERS, LLC
43	JHW INVESTMENTS, LLC
44	ADAMS EVENT CENTER LLC



DRAWING INFO.		REVISIONS	
NO.	DESCRIPTION	DATE	BY
1	PLANS FOR BID	09/30/25	KEL

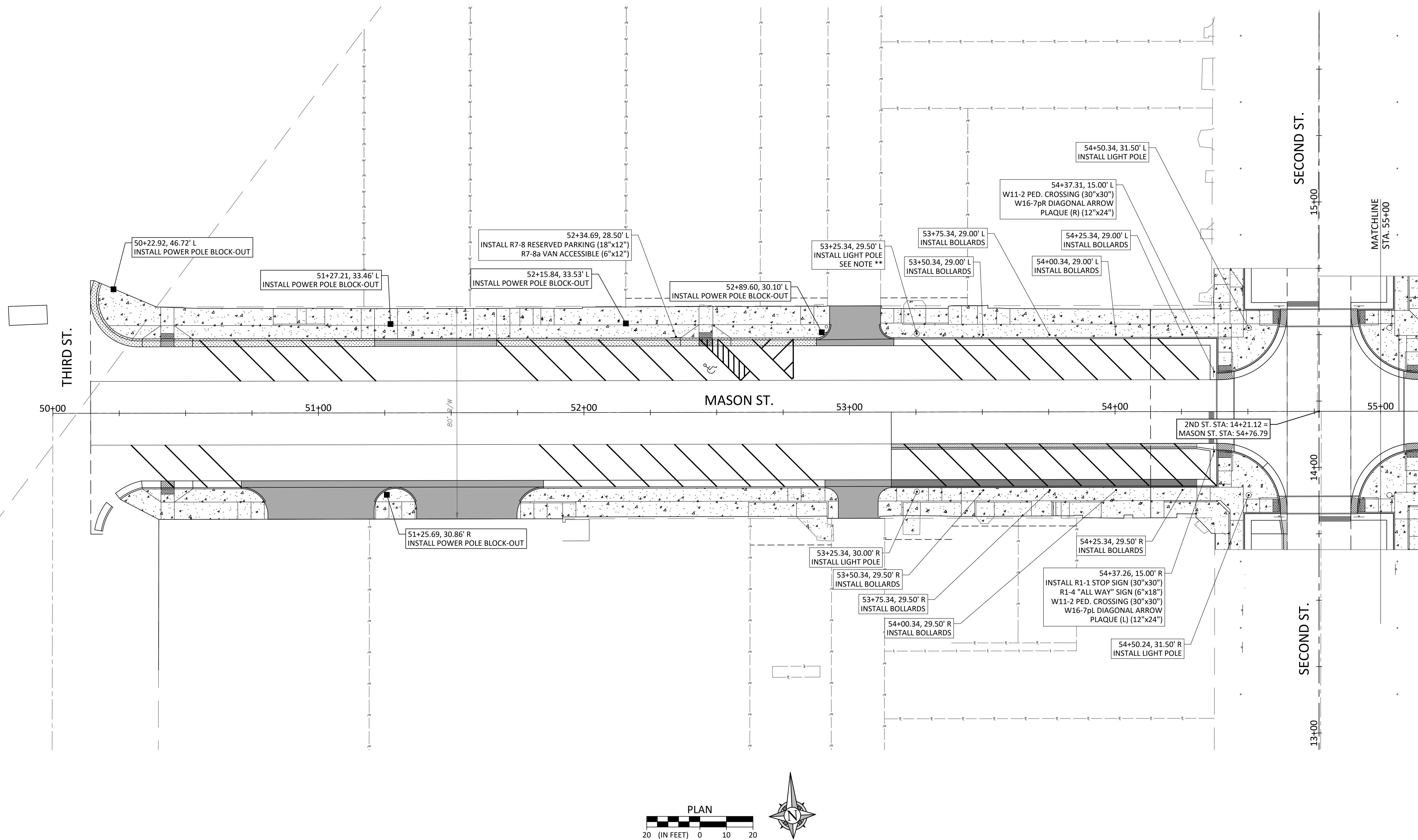
FIELD BY:	NDO
DRAWN BY:	
CHECK BY:	
DATE:	9/18/2025
FIELD BOOK:	TAP-990(443)
JOB NUMBER:	

GENERAL PLAN
MASON STREET HISTORICAL
DOWNTOWN DISTRICT IMPROVEMENTS
SECTION 36, T-49N, R28W / SECTION 01, T-48N, R28N
ODESSA, LAFAYETTE COUNTY, MO

SHEET NUMBER
10
OF 81

© Shared drawing: M:\2025\20250821\20250821 - TAP-990(443) - Odessa - Zone 8 - Downtown\CADD\Plan\General Plan

NOTE **
PLEASE TAKE CAUTION WHEN PLACING LIGHT POLE FOUNDATION.
2" GAS MAIN NEAR PROPOSED FOUNDATION.



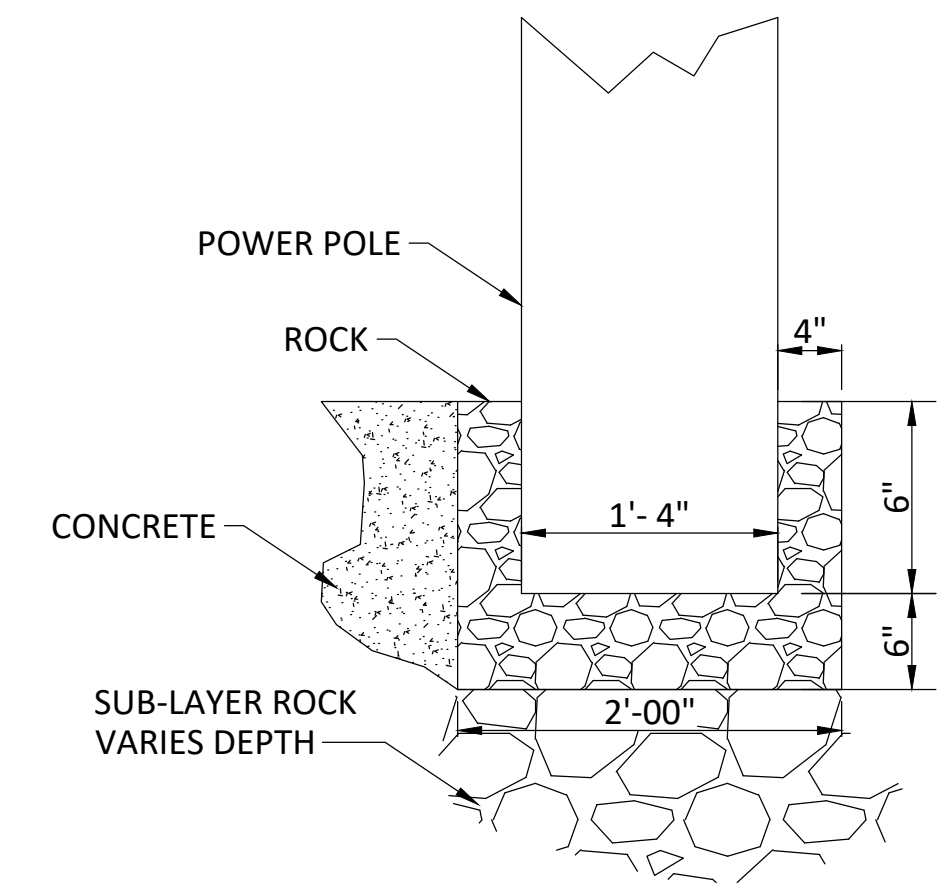
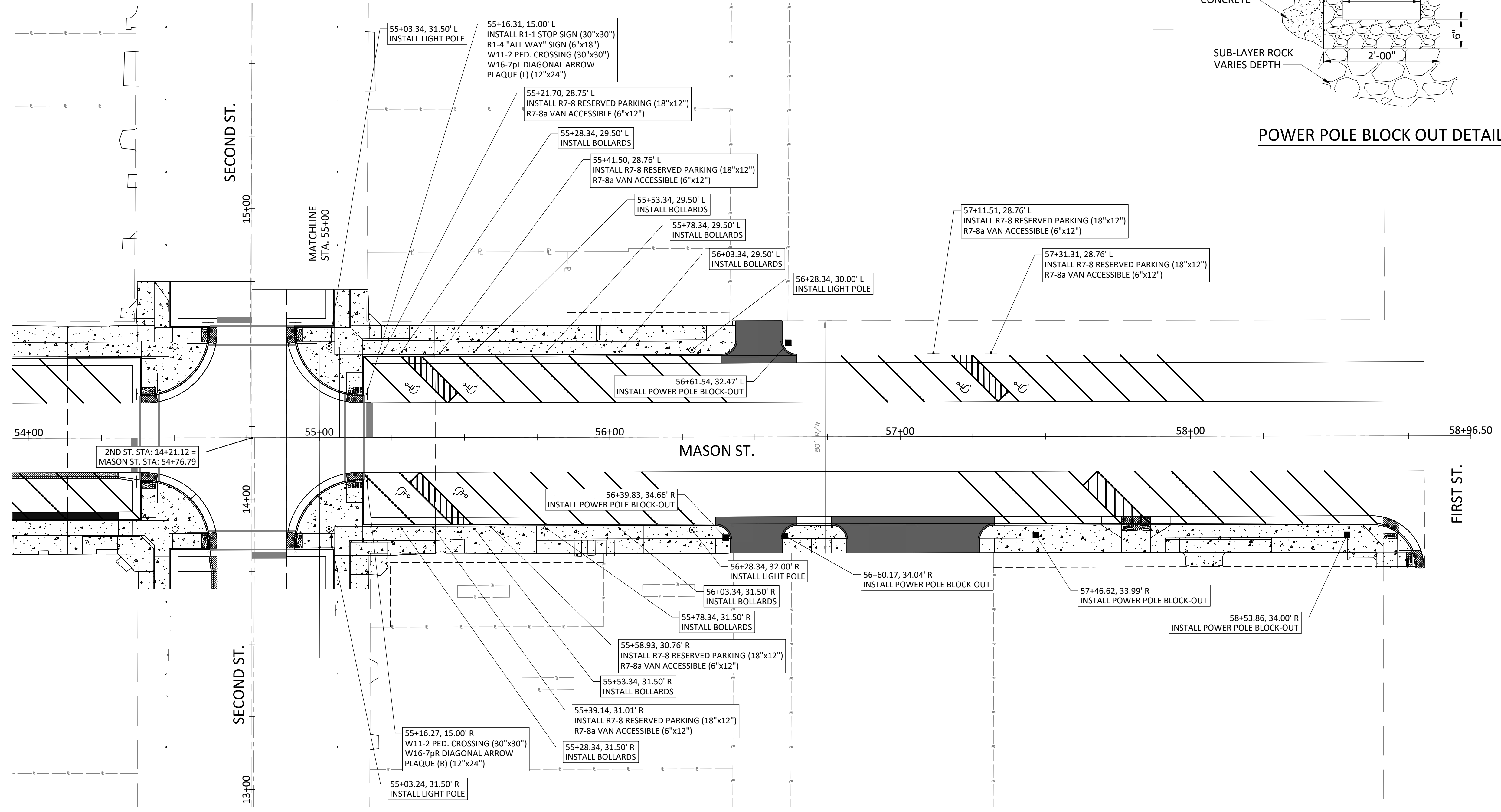
REVISIONS		DRAWING INFO.	
NO.	DESCRIPTION	BY	DATE
1	PLANS FOR BID	KEL	09/30/25

FIELD BY:	NDO
DRAWN BY:	
CHECK BY:	
DATE:	9/18/2025
FIELD BOOK:	
JOB NUMBER:	TAP-990(443)

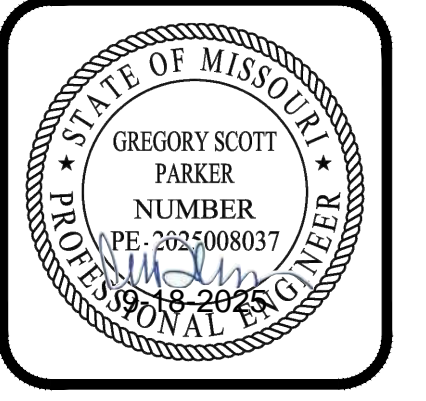
SIGN & POLE LAYOUT PLAN
MASON STREET HISTORICAL
DOWNTOWN DISTRICT IMPROVEMENTS
SECTION 36, T-49N, R28W / SECTION 01, T-48N, R28N
ODESSA, LAFAYETTE COUNTY, MO

SHEET NUMBER
48
OF 81

© Shuang Lin Engineering, Inc. 2025. All rights reserved. This drawing is the property of Shuang Lin Engineering, Inc. and is not to be reproduced without written permission.



POWER POLE BLOCK OUT DETAIL



REVISIONS		DRAWING INFO.	
NO.	DESCRIPTION	BY	DATE
1	PLANS FOR BID	KEL	09/30/25

FIELD BY:	NDO
DRAWN BY:	9/18/2025
CHECK BY:	DATE:
FIELD BOOK:	JOB NUMBER:
TAP-9901(443)	

SIGN & POLE LAYOUT PLAN
 MASON STREET HISTORICAL
 DOWNTOWN DISTRICT IMPROVEMENTS
 SECTION 36, T-49N, R28W / SECTION 01, T-48N, R28N
 ODESSA, LAFAYETTE COUNTY, MO